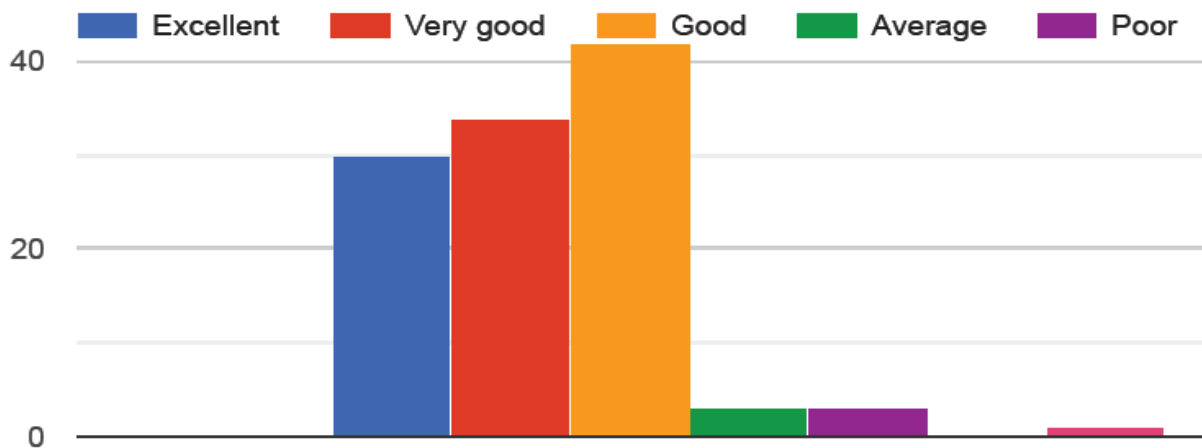


Employer Feedback on curriculum for the year 2016 - 2017

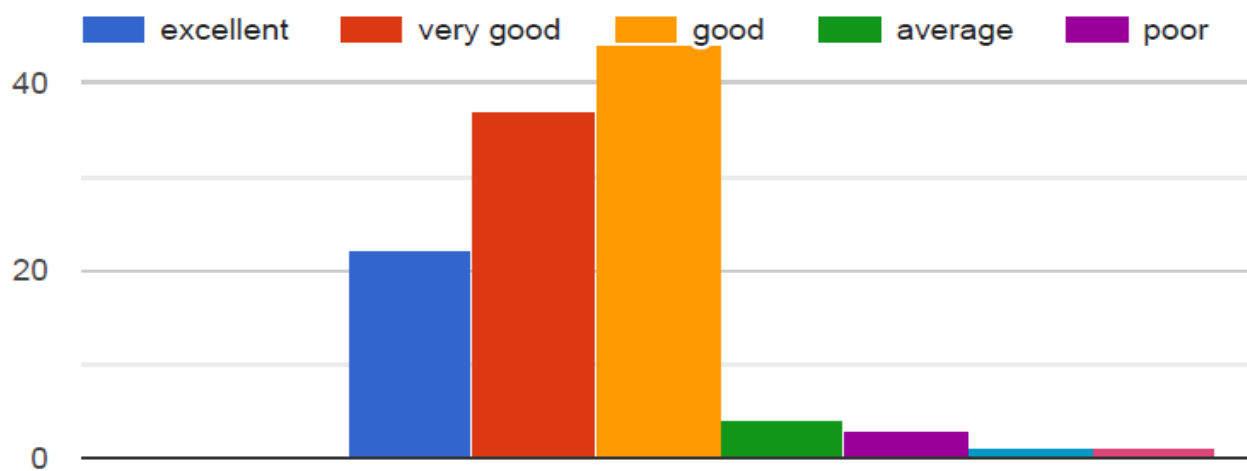
145 responses

Question 1



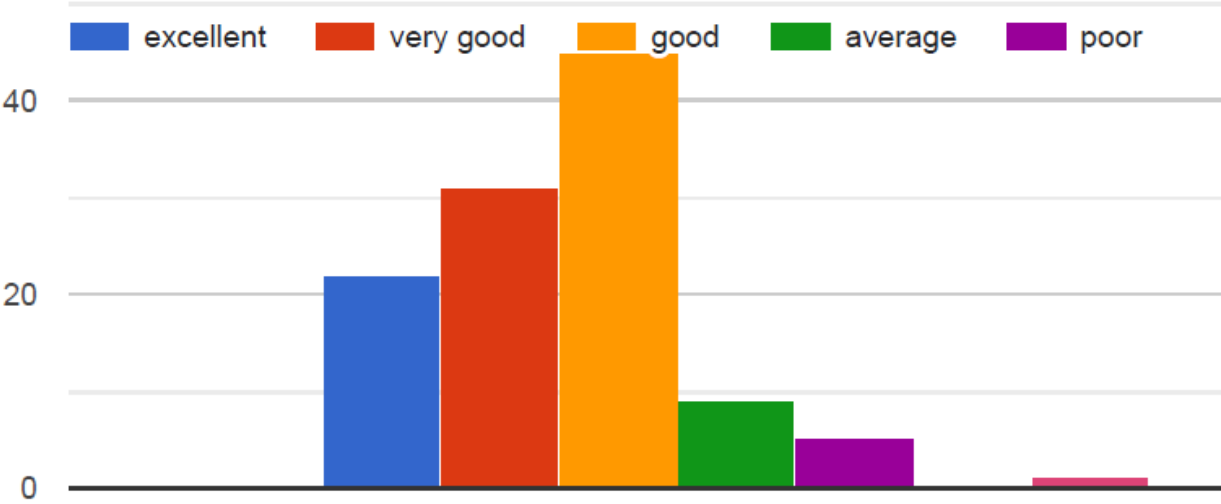
How do you rate relevance of the courses in relation to the program?

Question 2



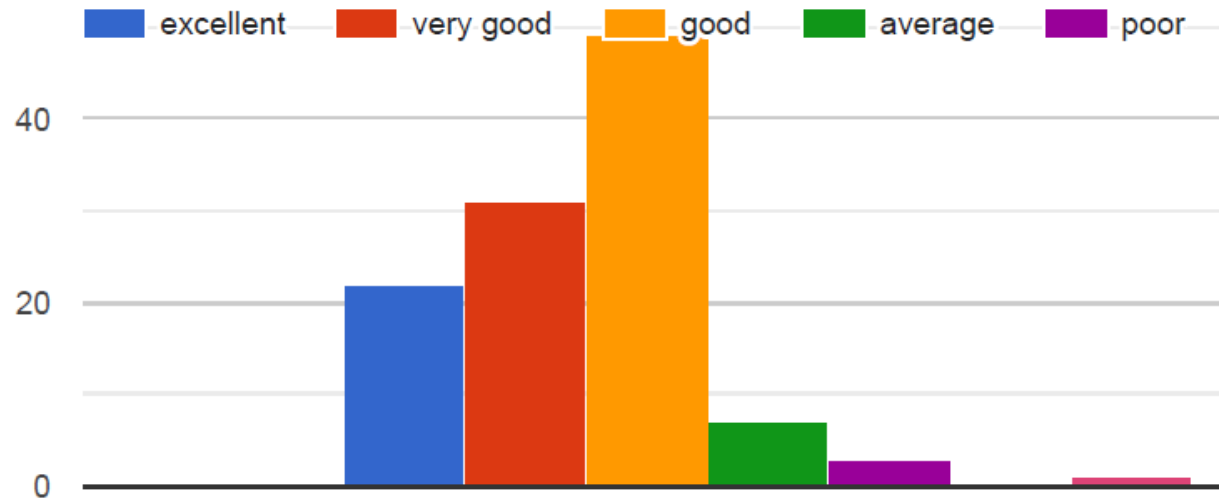
How do you rate the sufficiency of the courses related to industry that are included in the program?

Question 3



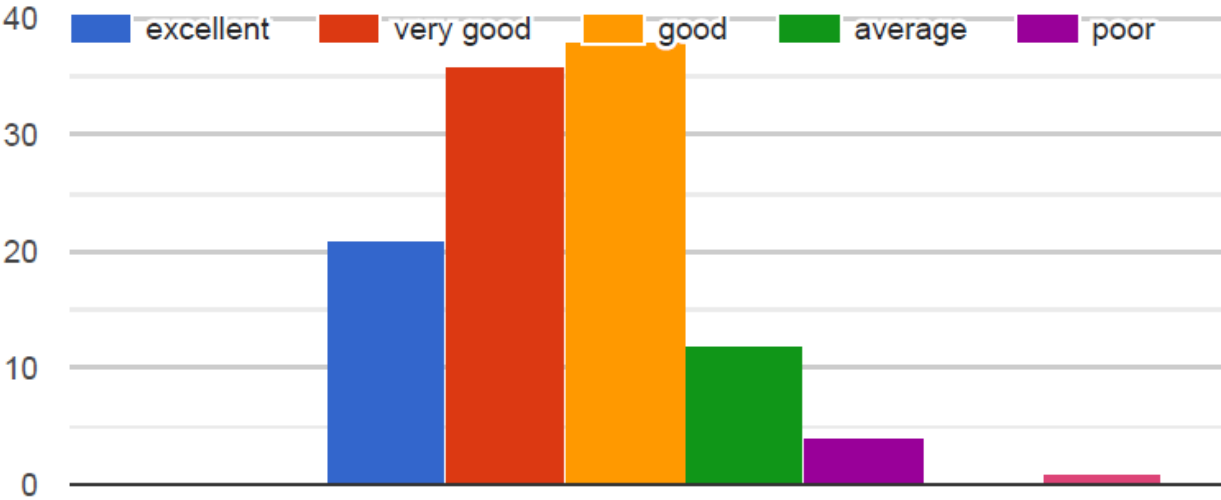
How do you rate the competencies/outcomes in relation to the course content?

Question 4



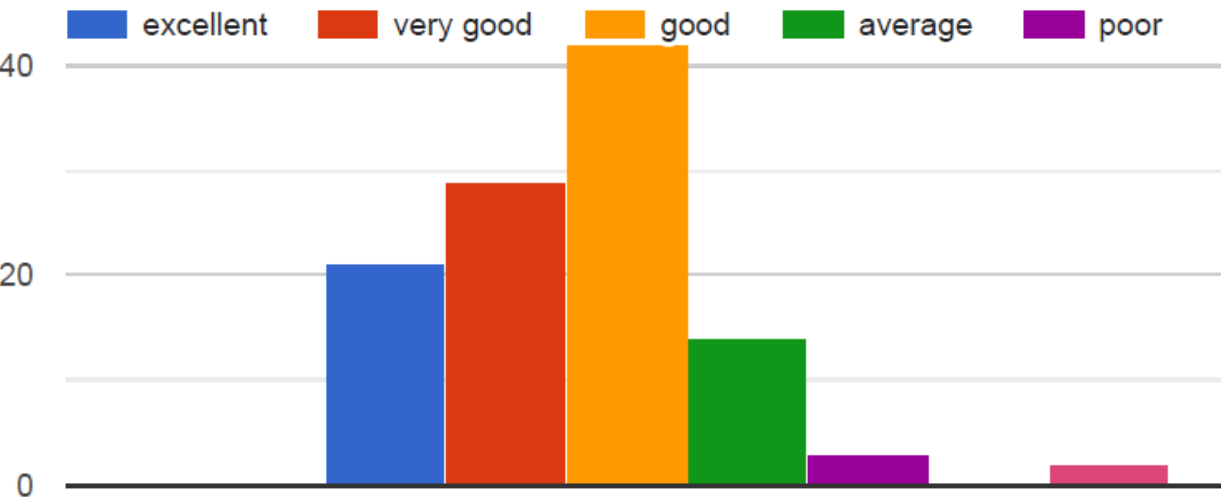
How do you rate the relevance of the topics to the Industry?

Question 5



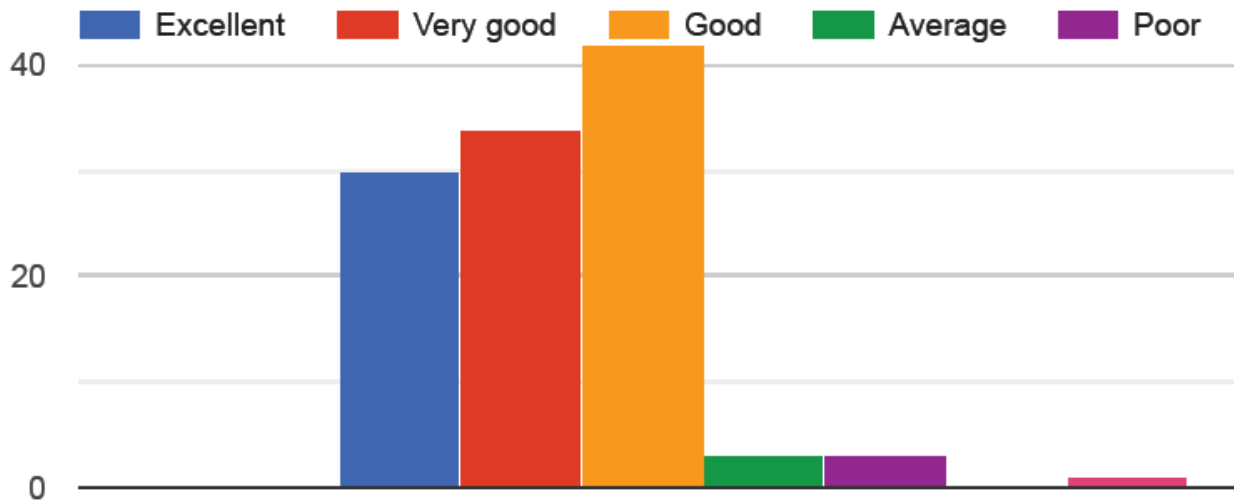
Rate the offering of the in relation to the specialization streams

Question 6



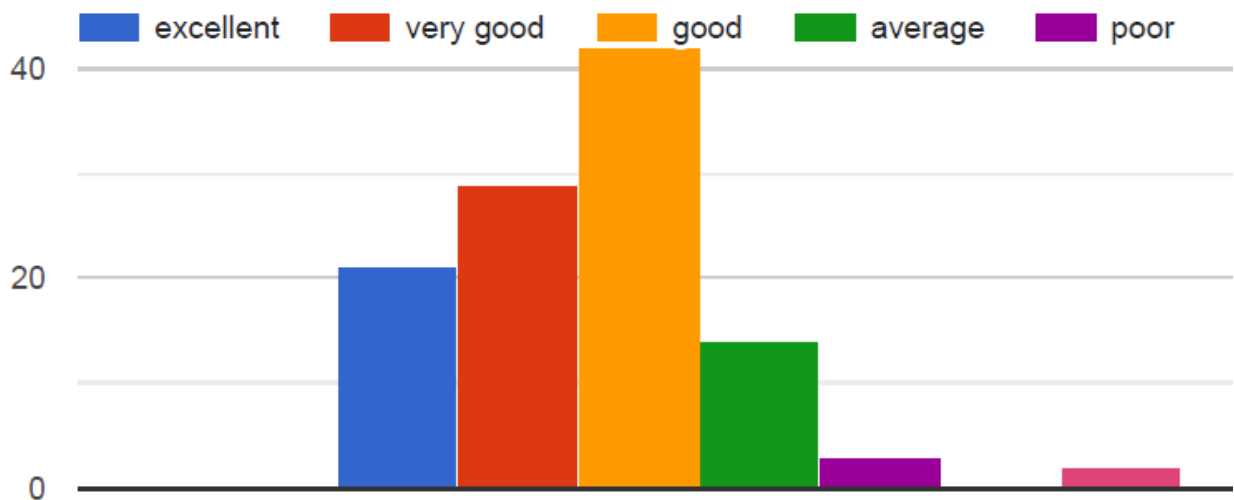
How do you rate the offering of the electives in relation to the Technological advancements

Question 7



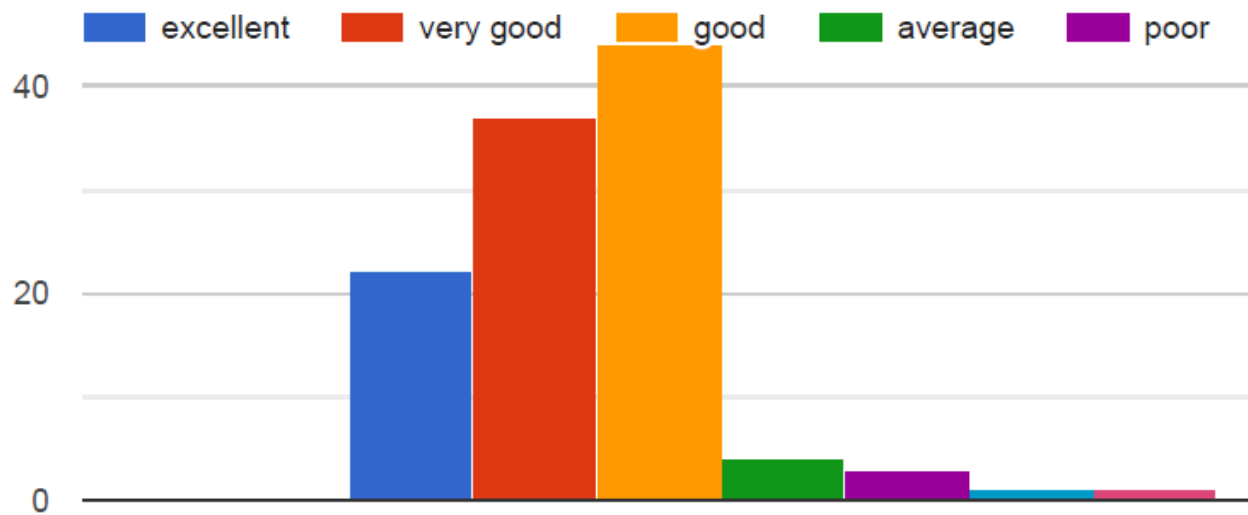
How do you rate the applicability of the domains and the tools used for designing the experiments in terms of existing practices in the Industry

Question 8



How do you rate the experiments in terms of their relevance to the real life application

Question 9



How do you rate the proficiency of our students working with you

Question 10

What other courses that you suggest to be included in the curriculum?

- Construction system design
- Construction engineering research methods
- Construction management information systems